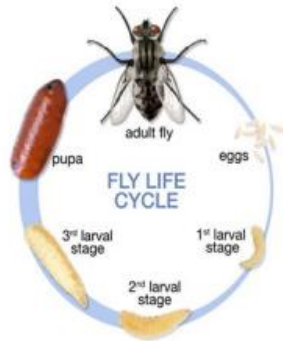




Inovata[®]
Flystrike Control

Flystrike costed \$37,000,000 annually to NZ farmers in 1995



Fly Challenge

- Warm
- Wet
- Low wind or shelter
- Long wool
- Fine wool
- Dags



House fly (*Lucilia cuprina*)
Photo by G de Lisle



European green blowfly (*Lucilia sericata*)
Photo courtesy M Friedrich

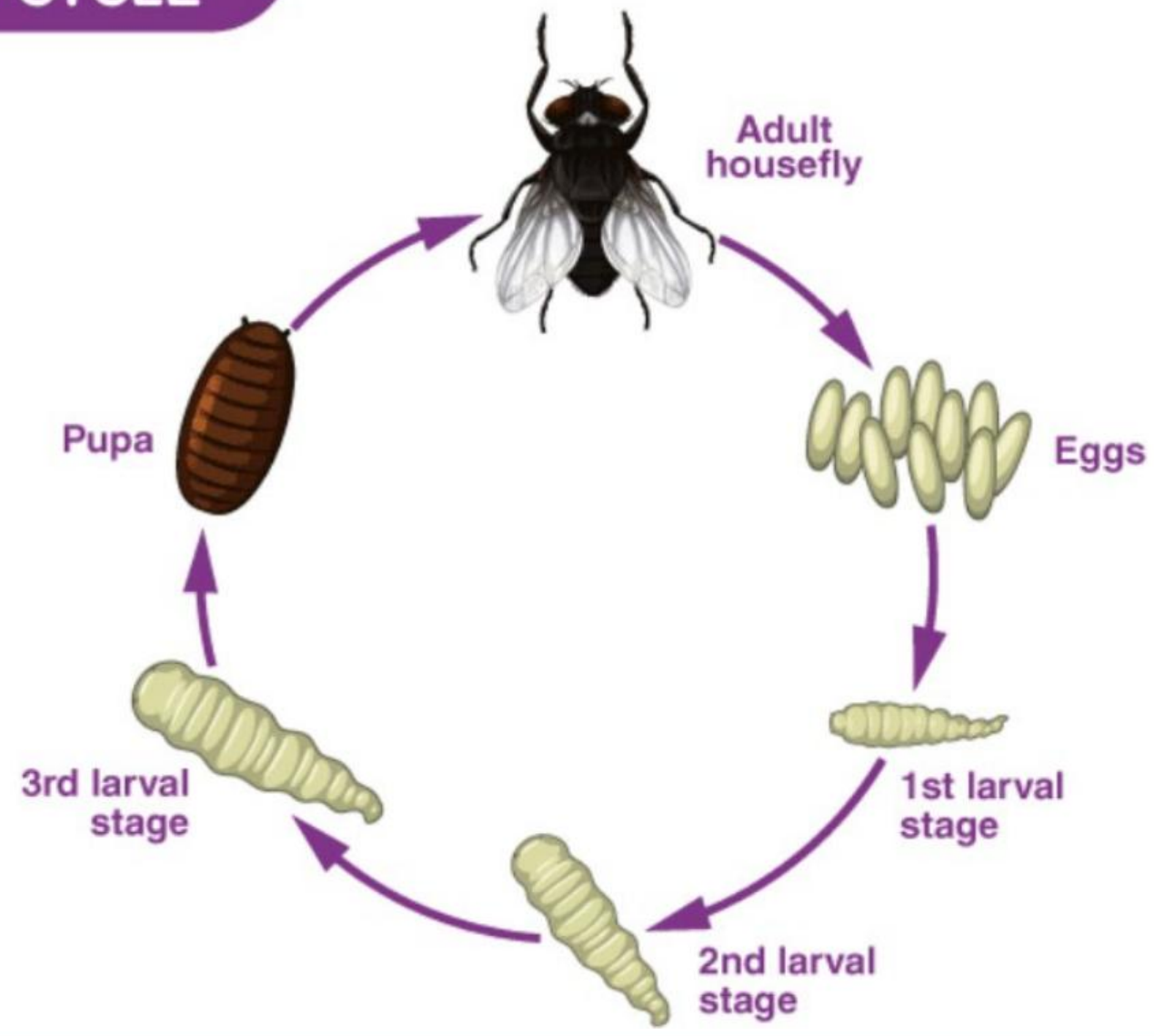


Blue fly (*Calliphora stygia*)

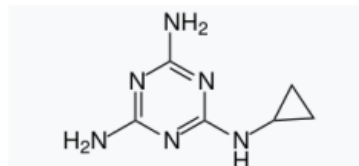


Hairy maggot blowfly (*Chrysomya rufifacies*). Photo courtesy A.C.G Heath

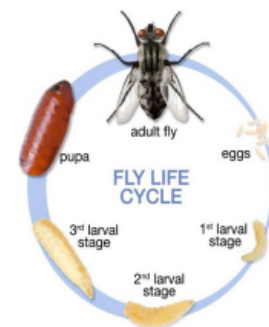
FLY LIFE CYCLE



Cyromazine



- Insect Growth Regulator – moult inhibitor and interfere with cuticle/skin formation
- Larvae need to moult to develop to their next stage of development
- Will also interfere with egg hatching
- No meaningful resistance diagnosed in NZ – some in NSW





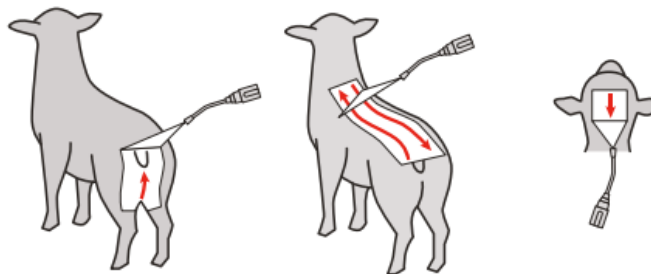
Active Ingredients

60 g/L Cyromazine

Withholding Periods: Meat 7 Days / Milk 35 Days / Wool 60 Days

Dose Rate: 1mL/kg

Pack Size: 10L & 20L



APPLICATION AND DOSE RATES OF INOVATA CYRO-SPRAY

For the protection of all the commonly struck areas of the sheep:

	2 bands sheep between 11-20 kg		3 bands sheep between 21-40 kg		4 bands sheep between 41-60 kg		5 bands
Liveweight (kg)	11-15	16-20	21-30	31-40	41-50	51-60	61-70
No. of bands	2	2	3	3	4	4	5
Volume per band (mL)	7.5	10	10	13.3	12.5	15	14
Total vol applied (mL)	15	20	30	40	50	60	70
Sheep treated per 10 L	666	500	333	250	200	166	142



Active Ingredients

500 g/L Cyromazine

Withholding Periods: Meat 7 Days / Milk 35 Days / Wool 60 Days

Dose Rate: 2mL/1L of water

Pack Size: 2L & 5L

What effects dip efficacy?

- Fly challenge
- Rainfall
- Application
- Wool length
- Concentration of wash
- Saturation to skin level
- Resistance

A group of sheep is shown from the chest up, with a semi-transparent blue horizontal band across the middle. The word "Inovata" is written in white, bold, sans-serif font across the blue band, with a registered trademark symbol (®) to its upper right. The background is a warm, golden light, suggesting a sunrise or sunset.

Inovata®