

DANGER

READ LABEL BEFORE USE. KEEP OUT OF REACH OF CHILDREN. FOR ANIMAL TREATMENT ONLY.

10L

Gemini

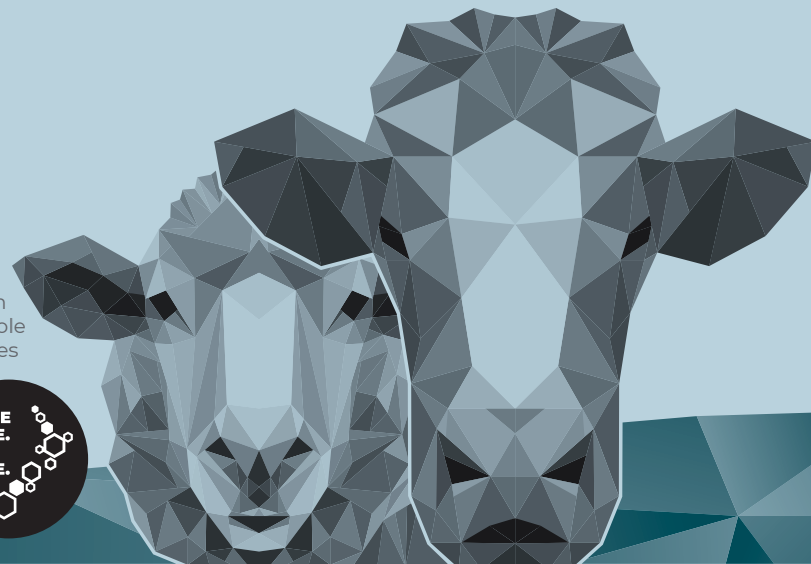
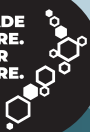
LOW-DOSE DOUBLE ACTIVE ORAL DRENCH FOR SHEEP & CATTLE

For the treatment and control of all major gastrointestinal parasites in sheep & cattle, including strains with single resistance to benzimidazole (BZ), levamisole (LEV) and avermectin/milbemycin (ML) action families or to combinations of ML + BZ, or BZ + LEV action families. Also provides supplementary source of cobalt and **selenium**.

2

Abamectin
Levamisole Hydrochloride

MADE
HERE.
FOR
HERE.



ACTIVE INGREDIENTS: Abamectin 2 g/L; Levamisole Hydrochloride 80 g/L.
Also contains: **Selenium** 5 mg per 5 mL and Cobalt 25 mg per 5 mL.

Inovata[®]

DANGER

READ LABEL BEFORE USE. KEEP OUT OF REACH OF CHILDREN. FOR ANIMAL TREATMENT ONLY.

10L

Gemini

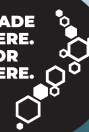
LOW-DOSE DOUBLE ACTIVE ORAL DRENCH FOR SHEEP & CATTLE

For the treatment and control of all major gastrointestinal parasites in sheep and cattle, including strains with single resistance to benzimidazole (BZ), levamisole (LEV) and avermectin/milbemycin (ML) action families or to combinations of ML + BZ, or BZ + LEV action families. Also provides supplementary source of cobalt and **selenium**.

2

Abamectin
Levamisole Hydrochloride

MADE
HERE.
FOR
HERE.



ACTIVE INGREDIENTS: Abamectin 2 g/L; Levamisole Hydrochloride 80 g/L.
Also contains: **Selenium** 5 mg per 5 mL and Cobalt 25 mg per 5 mL.

Inovata[®]

READ ENTIRE LABEL BEFORE USE

INDICATIONS Gemini contains levamisole, a member of the imidazothiazole family, abamectin, a member of the macrocyclic lactone family. It is effective against gastrointestinal worms sensitive to one or two or both drench families. For the effective treatment and control of mature and immature stages of susceptible strains of the following gastrointestinal parasites (*includes inhibited fourth stage larvae) and lungworm:

Roundworms	Genus	Sheep	Cattle
Abomasum Barber's Pole Worm* Small Brown Stomach Worm*	<i>Haemonchus*</i> <i>Teladorsagia*</i> <i>Ostertagia*</i>	<i>contortus</i> <i>circumcincta</i>	<i>ostertagi</i> <i>axeii</i>
Stomach Hair Worm	<i>Trichostrongylus</i>	<i>axeii</i>	
Small Intestine Black Scour Worm	<i>Trichostrongylus</i>	<i>colubriformis</i> <i>vitrinus</i>	<i>longispicularis</i>
Small Intestinal Worm*	<i>Cooperia</i>	<i>curticei</i>	<i>oncophora</i> <i>punctata</i>
Thin-Necked Intestinal Worm	<i>Nematodirus</i>	<i>filicollis</i> <i>spathiger</i> <i>abnormalis</i>	<i>helvetianus</i>
Hookworm	<i>Bunostomum</i> <i>Capillaria</i> <i>Strongyloides</i>	<i>trigonocephalum</i> <i>papillosus</i>	<i>phlebotomum</i> <i>bovis</i>
Large Intestine Large Bowel Worm Large-Mouthed Bowel Worm Whipworm	<i>Oesophagostomum</i> <i>Chabertia</i> <i>Trichuris</i>	<i>venulosum</i> <i>ovina</i> <i>ovis</i>	<i>radiatum</i>
Lungworm			
Large Lungworm	<i>Dictyocaulus</i>	<i>filaria</i>	<i>viviparus</i>

Anthelmintic resistant strains: For the effective treatment and control of susceptible strains of gastrointestinal worms with single resistance to benzimidazole (BZ), levamisole (LEV) and avermectin/milbemycin (ML) action families or to combinations of ML + BZ, or BZ + LEV action families.

DIRECTIONS FOR USE By law the user must take due care, obtaining expert advice if necessary, to avoid unnecessary pain and distress when using this product other than as directed on the label.

SHAKE WELL BEFORE USE. For oral administration only. Ensure formulation remains evenly suspended during use. A representative sample of animals should be weighed before treatment. Draft animals into lines of similar bodyweight, then dose according to the weight of the heaviest animal in the line. When there is a large variation in size within the group, dose rates should be based on the label directions for each weight range. Drafting into two or more lines may be appropriate to avoid excessive overdosing. Do not under dose. Correct drenching technique should be used. Check accuracy of drench guns regularly. Rinse gun with water immediately after use.

Accuracy of drench guns should be checked before and during drenching. Ensure that the dosing technique is accurate and that each animal receives and swallows the full dose.

WITHHOLDING PERIODS It is an offence for users of this product to cause residues exceeding the relevant MRL in the Food Notice: **Maximum Residue Levels for Agricultural Compounds.**

MEAT **Sheep: 14 days** - Sheep producing meat or offal for human consumption must not be sold for slaughter either during treatment or within 14 days of the last treatment.

Cattle: 14 days - Cattle producing meat or offal for human consumption must not be sold for slaughter either during treatment or within 14 days of the last treatment.

MILK **35 days** - Milk intended for sale for human consumption must be discarded during treatment and for not less than 35 days following the last treatment.

STORAGE Store locked up below 25°C, out of direct sunlight.

DISPOSAL Preferably dispose of product by use. Otherwise dispose of product, packaging and waste at an approved landfill or equivalent facility in accordance with local, regional and national environmental regulations. Inovata® is a member of Agrecovery Container Recycling programme. For details on how to correctly prepare your container and collection sites please visit www.agrecovery.co.nz.

DOSE RATE
SHEEP 1 mL per 10 kg Liveweight

Liveweight	Dose	Doses per 10 L pack
Less than 20 kg	DO NOT USE	
20-30 kg	3 mL	3333
31-40 kg	4 mL	2500
41-50 kg	5 mL	2000
51-60 kg	6 mL	1667
61-70 kg	7 mL	1429
Over 70 kg add 1 mL for every 5 kg liveweight		

CATTLE 1 mL per 10 kg Liveweight

Liveweight	Dose	Doses per 10 L pack
Less than 100 kg	DO NOT USE	
101-150 kg	15 mL	666
151-200 kg	20 mL	500
201-250 kg	25 mL	400
251-300 kg	30 mL	333
301-350 kg	35 mL	285
351-400 kg	40 mL	250
401-450 kg	45 mL	222
451-500 kg	50 mL	200
501-550 kg	55 mL	181
551-600 kg	60 mL	166
601-650 kg	65 mL	153
Over 650 kg add 1 mL for every 10 kg liveweight		

1 mL per 10 kg bodyweight equivalent to levamisole hydrochloride 8 mg, abamectin 0.2 mg and selenium 0.1 mg per kg bodyweight.



Harmful if swallowed. Causes mild skin irritation. May cause allergy or asthma symptoms or breathing difficulties if inhaled. May cause an allergic skin reaction. Suspected of causing genetic defects. Suspected of causing cancer. Suspected of damaging fertility or the unborn child. May cause harm to breast-fed children. May cause damage to blood system, heart from repeated oral exposure at high doses.

HANDLING PRECAUTIONS Wash hands thoroughly after handling. Do not eat, drink or smoke when using this product. In case of inadequate ventilation wear respiratory protection. Contaminated work clothing should not be allowed out of the workplace. Wear protective gloves and protective clothing. Obtain special instructions before use. Do not handle until all safety precautions have been read and understood. Do NOT breathe the mist/vapours/spray. Avoid contact during pregnancy/ while nursing. Avoid release to the environment. Very toxic to aquatic life. Harmful to the soil environment. Toxic to terrestrial vertebrates. Toxic to terrestrial invertebrates.

FIRST AID If medical advice is needed, have product container or label on hand. IF SWALLOWED: Call a POISON CENTRE or doctor/ physician if you feel unwell. Do NOT induce vomiting. IF INHALED: If breathing is difficult, remove to fresh air and keep at rest position comfortable for breathing. If experiencing respiratory symptoms: call a POISON CENTRE or doctor/ physician. IF IN EYES: Rinse cautiously with water for several minutes. Remove contact lenses, if present and easy to do so. Continue rinsing. Get medical advice/attention. IF ON SKIN: Wash with plenty of soap and water. If skin irritation or rash occurs: Get medical advice/ attention. Wash contaminated clothing before re-use. If exposed, or feel unwell, or concerned call a POISON CENTRE or get medical advice/ attention. **National Poisons Centre 24 Hour Phone: 0800 POISON (0800 764 766)**

WARNINGS AND CONTRAINDICATIONS - Please note that this product is in a concentrated form - Do not use in lambs under 20 kg or under 4 weeks of age - Do not use in calves under 100 kg - Do not use with milk or milk-feeders or while calves are suckling - Do not use on animals which are severely stressed or in ill health - Do not exceed stated dose or frequency without consulting veterinarian - Doses of 3 or more times those recommended can cause symptoms of levamisole toxicity, so estimate live weights carefully. Dehydrated animals may be more susceptible to toxicity - Do not treat at intervals of less than 3 weeks, due to selenium content - Do not use at the same time as any other selenium fertilizer, prill or product and do not exceed the stated dose or frequency without consulting a veterinarian - Fatal interactions may occur between levamisole and organophosphate dips - May be used in pregnant animals at recommended dose rates.

Inovata®



Registered to: Inovata Ltd, 16 Sheffield Crescent, Burnside, Christchurch 8053
PO Box 20449, Bishopdale, Christchurch 8543
www.inovata.co.nz | sales@inovata.co.nz | Freephone 0800 942 006

EPA Approval number HSR100758.
See www.epa.govt.nz for approval conditions.
Registered pursuant to the ACVM Act 1997: A011950
See www.foodsafety.govt.nz for registration conditions.



UN3082
ENVIRONMENTALLY HAZARDOUS SUBSTANCE LIQUID N.O.S.
(CONTAINS Abamectin, Selenium)
Packaging Group: III
Hazchem: 3Z

Batch:
Expiry:

NEW CODE TO COME 0000-000-000